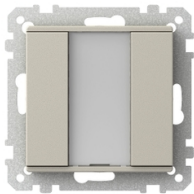


Product data sheet

Specifications



Push button, Exxact, KNX, 1-gang aluminium

WDE004931

 **Discontinued on:** Jun 30, 2023

 **Discontinued**

Main

Range	Exxact
Aesthetic Name	Primo
Product Or Component Type	Push-button
Bus Type	KNX

Complementary

Device Presentation	Mechanism with fixing frame
Technology Type	Electronic
Device Mounting	Flush
Function Available	With integrated bus coupling unit
Control Type	Push-button
Number Of Rocker	2
Colour Tint	Metallic
Material	Plastic brilliant
Local Signalling	LED
Marking Location	Marking on legend holder
Material	Plastic
Surface Finish	Glossy
Quantity Per Set	Set of 1
Height	71 mm
Width	71 mm

Environment

Ip Degree Of Protection	IP20
Ik Degree Of Protection	IK02

Packing Units

Unit Type Of Package 1	PCE
Number Of Units In Package 1	1
Package 1 Height	7.4 cm
Package 1 Width	4.2 cm

Disclaimer: This documentation is not intended as a substitute for and is not to be used for determining suitability or reliability of these products for specific user applications

Package 1 Length	7.4 cm
Package 1 Weight	65.0 g

Contractual warranty

Warranty	18 months
----------	-----------

Sustainability

Green Premium™ label is Schneider Electric’s commitment to delivering products with best-in-class environmental performance. Green Premium promises compliance with the latest regulations, transparency on environmental impacts, as well as circular and low-CO₂ products.

Guide to assessing product sustainability is a white paper that clarifies global eco-label standards and how to interpret environmental declarations.

[Learn more about Green Premium >](#)

[Guide to assess a product’s sustainability >](#)



Transparency RoHS/REACH

Well-being performance

✓ Mercury Free

✓ Rohs Exemption Information [Yes](#)

Certifications & Standards

Reach Regulation	REACH Declaration
Eu Rohs Directive	Compliant with Exemptions
China Rohs Regulation	China RoHS declaration Product out of China RoHS scope. Substance declaration for your information
Environmental Disclosure	Product Environmental Profile
Weee	The product must be disposed on European Union markets following specific waste collection and never end up in rubbish bins
Circularity Profile	No need of specific recycling operations