

# Product data sheet

Specifications



Key switch selector, Harmony XB5,  
plastic, black, 22mm, key 455, 2  
positions, stay put, 1 NO

XB5AG21

## Main

|                               |  |
|-------------------------------|--|
| Range Of Product              | Harmony XB5  |
| Product Or Component Type     | Selector switch  |
| Device Short Name             | XB5  |
| Bezel Material                | Dark grey plastic  |
| Head Type                     | Standard   |
| Mounting Diameter             | 22.5 mm  |
| Sale Per Indivisible Quantity | 1  |
| Shape Of Signaling Unit Head  | Round  |
| Type Of Operator              | stay put   |
| Operator Profile              | key switch   |
| Operator Position Information | 2 positions 90°  |
| Type Of Keylock               | Key 455  |
| Contacts Type And Composition | 1 NO   |
| Contact Operation             | Slow-break   |
| Connections - Terminals       | Screw clamp terminals, <= 2 x 1.5 mm² with cable end conforming to IEC 60947-1<br>Screw clamp terminals, >= 1 x 0.22 mm² without cable end conforming to IEC 60947-1 |

## Complementary

|                                    |   |
|------------------------------------|---|
| Height                             | 42 mm                                   |
| Width                              | 30 mm                                   |
| Depth                              | 96 mm                                   |
| Terminals Description Iso N°1      | (13-14)NO                               |
| Net Weight                         | 0.831 kg                                |
| Resistance To High Pressure Washer | 7000000 Pa at 55 °C, distance : 0.1 m   |
| Key Withdrawal Position            | Left-hand                               |
| Contacts Usage                     | Standard contacts                       |
| Positive Opening                   | Without                                 |
| Torque Value                       | 0.14 N.m NO changing electrical state   |
| Mechanical Durability              | 1000000 cycles                          |
| Tightening Torque                  | 0.8...1.2 N.m conforming to IEC 60947-1 |

Disclaimer: This documentation is not intended as a substitute for and is not to be used for determining suitability or reliability of these products for specific user applications

|   |  |
|---|--|
| Shape Of Screw Head                         | Cross compatible with Philips no 1 screwdriver<br>Cross compatible with pozidriv No 1 screwdriver<br>Slotted compatible with flat Ø 4 mm screwdriver<br>Slotted compatible with flat Ø 5.5 mm screwdriver  |
| Contacts Material                           | Silver alloy (Ag/Ni)   |
| Short-Circuit Protection                    | 10 A cartridge fuse type gG conforming to IEC 60947-5-1  |
| [Ith] Conventional Free Air Thermal Current | 10 A conforming to IEC 60947-5-1   |
| [Ui] Rated Insulation Voltage               | 600 V (pollution degree 3) conforming to IEC 60947-1   |
| [Uimp] Rated Impulse Withstand Voltage      | 6 kV conforming to IEC 60947-1   |
| [Ie] Rated Operational Current              | 3 A at 240 V, AC-15, A600 conforming to IEC 60947-5-1<br>6 A at 120 V, AC-15, A600 conforming to IEC 60947-5-1<br>0.1 A at 600 V, DC-13, Q600 conforming to IEC 60947-5-1<br>0.27 A at 250 V, DC-13, Q600 conforming to IEC 60947-5-1<br>0.55 A at 125 V, DC-13, Q600 conforming to IEC 60947-5-1<br>1.2 A at 600 V, AC-15, A600 conforming to IEC 60947-5-1   |
| Electrical Durability                       | 1000000 cycles, AC-15, 2 A at 230 V, operating rate <3600 cyc/h, load factor: 0.5 conforming to IEC 60947-5-1 appendix C<br>1000000 cycles, AC-15, 3 A at 120 V, operating rate <3600 cyc/h, load factor: 0.5 conforming to IEC 60947-5-1 appendix C<br>1000000 cycles, AC-15, 4 A at 24 V, operating rate <3600 cyc/h, load factor: 0.5 conforming to IEC 60947-5-1 appendix C<br>1000000 cycles, DC-13, 0.2 A at 110 V, operating rate <3600 cyc/h, load factor: 0.5 conforming to IEC 60947-5-1 appendix C<br>1000000 cycles, DC-13, 0.5 A at 24 V, operating rate <3600 cyc/h, load factor: 0.5 conforming to IEC 60947-5-1 appendix C |
| Electrical Reliability                      | $\Lambda < 10\text{exp}(-6)$ at 5 V, 1 mA in clean environment conforming to IEC 60947-5-4<br>$\Lambda < 10\text{exp}(-8)$ at 17 V, 5 mA in clean environment conforming to IEC 60947-5-4  |
| Device Presentation                         | Complete product   |

## Environment

|                                       |  |
|---------------------------------------|--|
| Protective Treatment                  | TH   |
| Ambient Air Temperature For Storage   | -40...70 °C  |
| Ambient Air Temperature For Operation | -40...70 °C  |
| Electrical Shock Protection Class     | Class II conforming to IEC 60536   |
| Ip Degree Of Protection               | IP69<br>IP69K<br>IP66 conforming to IEC 60529<br>IP67  |
| Nema Degree Of Protection             | NEMA 13<br>NEMA 4X   |
| Ik Degree Of Protection               | IK04 conforming to IEC 50102   |
| Standards                             | UL 508<br>CSA C22.2 No 14<br>IEC 60947-5-1<br>IEC 60947-5-4<br>IEC 60947-1<br>JIS C8201-5-1<br>JIS C8201-1 |
| Product Certifications                | LROS (Lloyds register of shipping)<br>CSA<br>DNV<br>GL<br>BV<br>UL   |
| Vibration Resistance                  | 5 gn (f= 2...500 Hz) conforming to IEC 60068-2-6   |

|                  |  |
|------------------|--|
| Shock Resistance | 30 gn (duration = 18 ms) for half sine wave acceleration conforming to IEC 60068-2-27<br>50 gn (duration = 11 ms) for half sine wave acceleration conforming to IEC 60068-2-27 |
|------------------|--|

## Packing Units

|                              |           |
|------------------------------|-----------|
| Unit Type Of Package 1       | PCE       |
| Number Of Units In Package 1 | 1         |
| Package 1 Height             | 3.600 cm  |
| Package 1 Width              | 5.300 cm  |
| Package 1 Length             | 9.000 cm  |
| Package 1 Weight             | 82.000 g  |
| Unit Type Of Package 2       | BB1       |
| Number Of Units In Package 2 | 5         |
| Package 2 Height             | 8.600 cm  |
| Package 2 Width              | 26.000 cm |
| Package 2 Length             | 3.300 cm  |
| Package 2 Weight             | 410.000 g |
| Unit Type Of Package 3       | S03       |
| Number Of Units In Package 3 | 100       |
| Package 3 Height             | 30.000 cm |
| Package 3 Width              | 30.000 cm |
| Package 3 Length             | 40.000 cm |
| Package 3 Weight             | 8.665 kg  |

## Contractual warranty

|          |           |
|----------|-----------|
| Warranty | 18 months |
|----------|-----------|

## Sustainability

**Green Premium™ label** is Schneider Electric's commitment to delivering products with best-in-class environmental performance. Green Premium promises compliance with the latest regulations, transparency on environmental impacts, as well as circular and low-CO<sub>2</sub> products.

**Guide to assessing product sustainability** is a white paper that clarifies global eco-label standards and how to interpret environmental declarations.

[Learn more about Green Premium >](#)

[Guide to assess a product's sustainability >](#)



RoHS/REACH

## Well-being performance

✓ Mercury Free

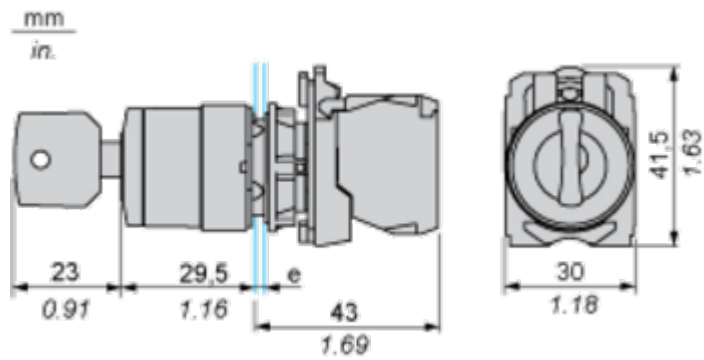
✓ Rohs Exemption Information Yes

## Certifications & Standards

|                           |   |
|---------------------------|---|
| Reach Regulation          | <a href="#">REACH Declaration</a>   |
| Eu Rohs Directive         | Pro-active compliance (Product out of EU RoHS legal scope)  |
| China Rohs Regulation     | <a href="#">China RoHS declaration</a>  |
| Weee                      | The product must be disposed on European Union markets following specific waste collection and never end up in rubbish bins   |
| California Proposition 65 | WARNING: This product can expose you to chemicals including: Lead and lead compounds, which is known to the State of California to cause cancer and birth defects or other reproductive harm. For more information go to <a href="http://www.P65Warnings.ca.gov">www.P65Warnings.ca.gov</a> |

Dimensions Drawings

Dimensions

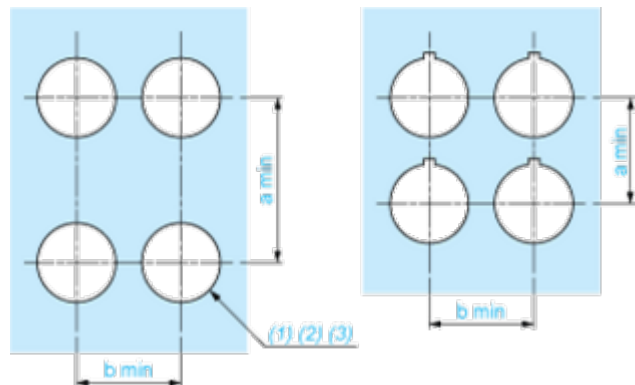


e: clamping thickness: 1 to 6 mm / 0.04 to 0.24 in.

Mounting and Clearance

Panel Cut-out for Pushbuttons, Switches and Pilot Lights (Finished Holes, Ready for Installation)

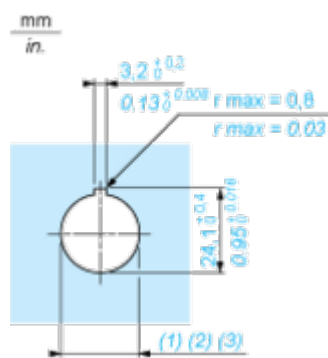
Connection by Screw Clamp Terminals or Plug-in Connectors or on Printed Circuit Board



- (1) Diameter on finished panel or support  
(2) For selector switches and Emergency stop buttons, use of an anti-rotation plate type ZB5AZ902 is recommended.  
(3) Ø22.5 mm recommended ( $\text{Ø}22.3 \begin{smallmatrix} +0.4 \\ 0 \end{smallmatrix}$ ) / Ø0.89 in. recommended ( $\text{Ø}0.88 \text{ in. } \begin{smallmatrix} +0.016 \\ 0 \end{smallmatrix}$ )

| Connections                                   | a in mm | a in in. | b in mm | b in in. |
|---|---------|----------|---------|----------|
| By screw clamp terminals or plug-in connector | 40      | 1.57     | 30      | 1.18     |
| By Faston connectors                          | 45      | 1.77     | 32      | 1.26     |
| On printed circuit board                      | 30      | 1.18     | 30      | 1.18     |

Detail of Lug Recess



- (1) Diameter on finished panel or support  
(2) For selector switches and Emergency stop buttons, use of an anti-rotation plate type ZB5AZ902 is recommended.  
(3) Ø22.5 mm recommended ( $\text{Ø}22.3 \begin{smallmatrix} +0.4 \\ 0 \end{smallmatrix}$ ) / Ø0.89 in. recommended ( $\text{Ø}0.88 \text{ in. } \begin{smallmatrix} +0.016 \\ 0 \end{smallmatrix}$ )