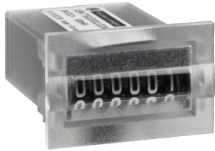



Product data sheet

Specifications



totalising counter - mechanical 6 digit display - 24 V DC

XBKT60000U00M

 **Discontinued on:** Oct 1, 2021

 **Discontinued**

Main

Range Of Product	Zelio Count
Product Or Component Type	Totalising counter
Display Type	Mechanical
Size	20 x 30 mm
Display Digits	6 digit(s) - 4 mm in height
Maximum Counting Frequency	25 Hz
Reset	Without
Counting Capacity	0...999 999
Technology Type	Electromechanical

Complementary

[Us] Rated Supply Voltage	24 V DC Us +/- 10 %
Power Consumption In Va	0.155 VA
Backup Time	Permanent
Counting Mode	Adding
Input Function	Counting
Input Type	Contact
Mechanical Durability	10000000 cycles
Mounting Mode	Flush-mounted
Mounting Support	Panel mounting
Connections - Terminals	AMP lugs (connection box)
Height	20 mm
Net Weight	0.03 kg
Width	30 mm
Cad Overall Width	30 mm
Cad Overall Height	20 mm
Cad Overall Depth	42 mm

Environment

Standards	EN/IEC 50081-2 EN/IEC 50082-2
-----------	----------------------------------

Disclaimer: This documentation is not intended as a substitute for and is not to be used for determining suitability or reliability of these products for specific user applications

Ip Degree Of Protection	IP65 conforming to EN/IEC 60529
Ambient Air Temperature For Operation	-10...70 °C
Ambient Air Temperature For Storage	-40...85 °C
Vibration Resistance	5 gn (f= 10...150 Hz) conforming to EN/IEC 60068-2-6
Shock Resistance	30 gn for 6 ms conforming to EN/IEC 60068-2-27
Electrical Shock Protection Class	Class II conforming to IEC 60536

Packing Units

Unit Type Of Package 1	PCE
Number Of Units In Package 1	1
Package 1 Height	3.4 cm
Package 1 Width	6.5 cm
Package 1 Length	3.7 cm
Package 1 Weight	20 g

Contractual warranty

Warranty	18 months
----------	-----------

Sustainability



Green Premium™ label is Schneider Electric’s commitment to delivering products with best-in-class environmental performance. Green Premium promises compliance with the latest regulations, transparency on environmental impacts, as well as circular and low-CO₂ products.

Guide to assessing product sustainability is a white paper that clarifies global eco-label standards and how to interpret environmental declarations.

[Learn more about Green Premium >](#)

[Guide to assess a product’s sustainability >](#)

Well-being performance

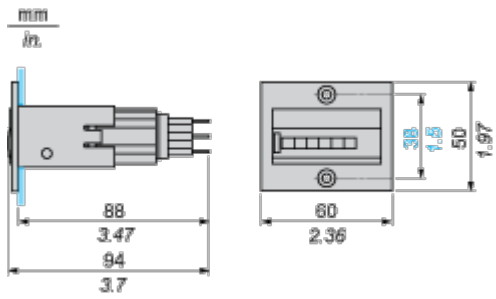
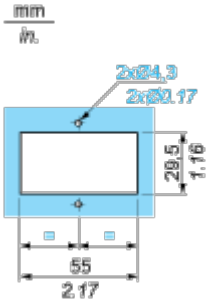
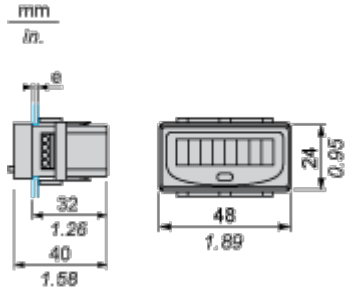
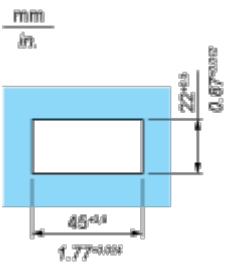
 Mercury Free	
 Rohs Exemption Information	Yes
Eu Rohs Directive	Pro-active compliance (Product out of EU RoHS legal scope)
China Rohs Regulation	China RoHS declaration
Weee	The product must be disposed on European Union markets following specific waste collection and never end up in rubbish bins
California Proposition 65	WARNING: This product can expose you to chemicals including: Lead and lead compounds, which is known to the State of California to cause cancer and birth defects or other reproductive harm. For more information go to www.P65Warnings.ca.gov

Dimensions Drawings

Electromechanical and Electronic Totalizing Counters

Dimensions, Flush-Mounting

Counters Dimensions	Flush-Mounting
XBKT50000U••M, XBKT70000U••M	
<p>mm in.</p> <p>64,2 2.53 75 2.95</p> <p>41,5 1.63 31 1.22</p>	<p>mm in.</p> <p>38,5 1.52 27 1.06</p>
XBKT60000U00M	
<p>mm in.</p> <p>33,7 1.33 42,3 1.67</p> <p>30 1.18 20 0.79</p>	<p>mm in.</p> <p>27,4 1.08 14,2 0.56</p>
XBKT60000U1•M	
<p>mm in.</p> <p>68 3.47 101,5 3.99</p> <p>60 2.36 38 1.5 50 1.97</p>	<p>mm in.</p> <p>2x24,3 2x22,17 28,5 1.16 55 2.17</p>
XBKT80000U00M	

Counters Dimensions	Flush-Mounting
 <p>Technical drawings of the XBKT60000U00M device showing side and front views with dimensions in mm and in.</p> <p>Side view dimensions (mm/in):</p> <ul style="list-style-type: none">Overall width: 88 / 3.47Mounting tab width: 94 / 3.7Terminal block width: 36 / 1.42Terminal block height: 1.5Terminal block depth: 50 / 1.97Terminal block width: 60 / 2.36 <p>Front view dimensions (mm/in):</p> <ul style="list-style-type: none">Overall width: 88 / 3.47Mounting tab width: 94 / 3.7Terminal block width: 36 / 1.42Terminal block height: 1.5Terminal block depth: 50 / 1.97Terminal block width: 60 / 2.36	 <p>Technical drawing of the XBKT60000U00M device showing the flush-mounting view with dimensions in mm and in.</p> <p>Dimensions (mm/in):</p> <ul style="list-style-type: none">Overall width: 88 / 3.47Mounting tab width: 94 / 3.7Terminal block width: 36 / 1.42Terminal block height: 1.5Terminal block depth: 50 / 1.97Terminal block width: 60 / 2.36
XBKT81030U33E	
 <p>Technical drawings of the XBKT81030U33E device showing side and front views with dimensions in mm and in.</p> <p>Side view dimensions (mm/in):</p> <ul style="list-style-type: none">Overall width: 32 / 1.26Mounting tab width: 40 / 1.58Terminal block width: 1.26Terminal block height: 1.58 <p>Front view dimensions (mm/in):</p> <ul style="list-style-type: none">Overall width: 48 / 1.89Mounting tab width: 24 / 0.95Terminal block width: 1.89Terminal block height: 0.95	 <p>Technical drawing of the XBKT81030U33E device showing the flush-mounting view with dimensions in mm and in.</p> <p>Dimensions (mm/in):</p> <ul style="list-style-type: none">Overall width: 48 / 1.89Mounting tab width: 24 / 0.95Terminal block width: 1.89Terminal block height: 0.95
e: panel thickness, 1 mm < e < 2.5 mm / 0.039 in. < e < 0.098	