

# Product data sheet

Specifications



Limit switch, XC Standard, XCKJ, steel roller lever, 1NC+1 NO, snap action, M12

XCKJ10513D

## Main

Range Of Product	Telemecanique Limit switches XC Standard
Series Name	Standard format
Product Or Component Type	Limit switch
Device Short Name	XCKJ
Sensor Design	Form A conforming to CENELEC EN 50041
Body Type	Fixed
Head Type	Rotary head
Material	Metal
Body Material	Zamak
Head Material	Zamak
Fixing Mode	By the body
Movement Of Operating Head	Rotary
Type Of Operator	Spring return roller lever metal
Type Of Approach	Lateral approach, 1 or 2 programmable direction
Number Of Poles	2
Contacts Type And Composition	1 NC + 1 NO
Contact Operation	Snap action

## Complementary

Switch Actuation	By 30° cam
Electrical Connection	Male connector M12, 5 pins
Contacts Insulation Form	Zb
Number Of Steps	1
Positive Opening	With
Positive Opening Minimum Torque	0.5 N.m
Minimum Torque For Tripping	0.25 N.m
Maximum Actuation Speed	1.5 m/s
[Ie] Rated Operational Current	0.27 A at 50 V, DC-13 conforming to IEC 60947-5-1 appendix A 3 A at 50 V, AC-15 conforming to IEC 60947-5-1 appendix A
[Ithe] Conventional Enclosed Thermal Current	4 A
[Ui] Rated Insulation Voltage	60 V (pollution degree 3) conforming to IEC 60947-1

Disclaimer: This documentation is not intended as a substitute for and is not to be used for determining suitability or reliability of these products for specific user applications

Maximum Resistance Across Terminals	25 MOhm conforming to IEC 60255-7 category 3
[Uimp] Rated Impulse Withstand Voltage	0.8 kV conforming to IEC 60664 0.8 kV conforming to IEC 60947-1
Short-Circuit Protection	4 A cartridge fuse, type gG
Electrical Durability	5000000 cycles, DC-13, inductive load type, 24 V, 10 W, operating rate <60 cyc/mn, load factor: 0.5 conforming to IEC 60947-5-1 appendix C 5000000 cycles, DC-13, inductive load type, 48 V, 7 W, operating rate <60 cyc/mn, load factor: 0.5 conforming to IEC 60947-5-1 appendix C
Mechanical Durability	30000000 cycles
Width	40 mm
Height	89 mm
Depth	44 mm
Net Weight	0.49 kg
Terminals Description Iso N°1	(13-14)NO (21-22)NC

## Environment

Shock Resistance	50 gn for 11 ms conforming to IEC 60068-2-27
Vibration Resistance	25 gn (f= 10...500 Hz) conforming to IEC 60068-2-6
Ip Degree Of Protection	IP66 conforming to IEC 60529
Ik Degree Of Protection	IK07 conforming to IEC 62262
Overvoltage Category	Class I conforming to IEC 61140 Class I conforming to NF C 20-030
Ambient Air Temperature For Operation	-25...70 °C
Ambient Air Temperature For Storage	-40...70 °C
Protective Treatment	TH
Product Certifications	UL CSA CCC
Standards	UL 508 IEC 60947-5-1 CSA C22.2 No 14 IEC 60947-5-1 IEC 60204-1 CENELEC EN 50041 IEC 60204-1

## Packing Units

Unit Type Of Package 1	PCE
Number Of Units In Package 1	1
Package 1 Height	4.000 cm
Package 1 Width	5.400 cm
Package 1 Length	20.200 cm
Package 1 Weight	500.000 g
Unit Type Of Package 2	S02
Number Of Units In Package 2	18
Package 2 Height	15.000 cm
Package 2 Width	30.000 cm

Package 2 Length	40.000 cm
Package 2 Weight	9.514 kg
Unit Type Of Package 3	P06
Number Of Units In Package 3	288
Package 3 Height	75.000 cm
Package 3 Width	60.000 cm
Package 3 Length	80.000 cm
Package 3 Weight	161.220 kg

## Contractual warranty

Warranty	18 months
----------	-----------

## Sustainability

**Green Premium™ label** is Schneider Electric's commitment to delivering products with best-in-class environmental performance. Green Premium promises compliance with the latest regulations, transparency on environmental impacts, as well as circular and low-CO<sub>2</sub> products.

**Guide to assessing product sustainability** is a white paper that clarifies global eco-label standards and how to interpret environmental declarations.

[Learn more about Green Premium >](#)

[Guide to assess a product's sustainability >](#)



RoHS/REACH

## Well-being performance

✓ Mercury Free

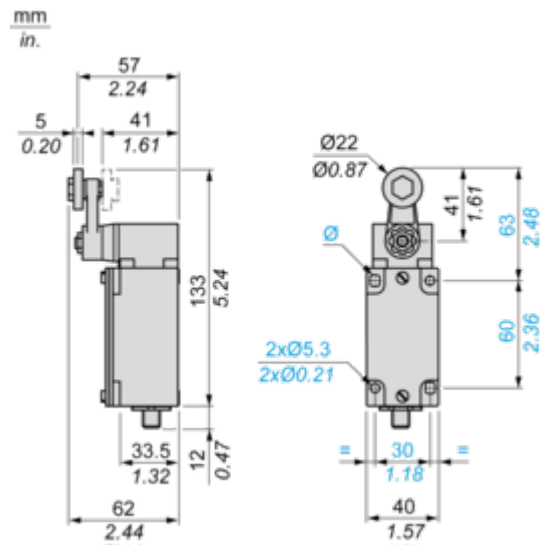
✓ Rohs Exemption Information [Yes](#)

## Certifications & Standards

Reach Regulation	<a href="#">REACH Declaration</a>
Eu Rohs Directive	Pro-active compliance (Product out of EU RoHS legal scope)
Circularity Profile	No need of specific recycling operations
California Proposition 65	WARNING: This product can expose you to chemicals including: Diisononyl phthalate (DINP), which is known to the State of California to cause cancer, and Diisodecyl phthalate (DIDP), which is known to the State of California to cause birth defects or other reproductive harm. For more information go to <a href="http://www.P65Warnings.ca.gov">www.P65Warnings.ca.gov</a>

Dimensions Drawings

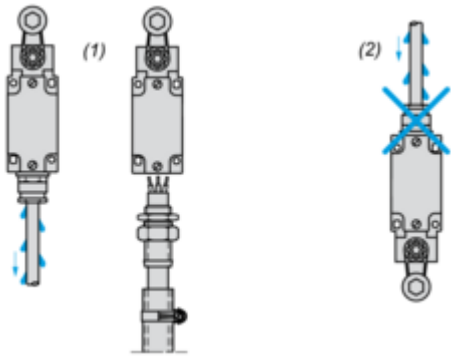
Dimensions



Mounting and Clearance

Mounting with Cable Entry

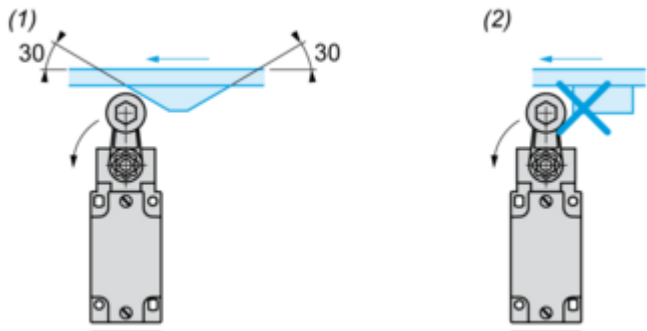
Position of Cable Gland



- (1) Recommended
- (2) To be avoided

Mounting with Rotary Heads and Levers

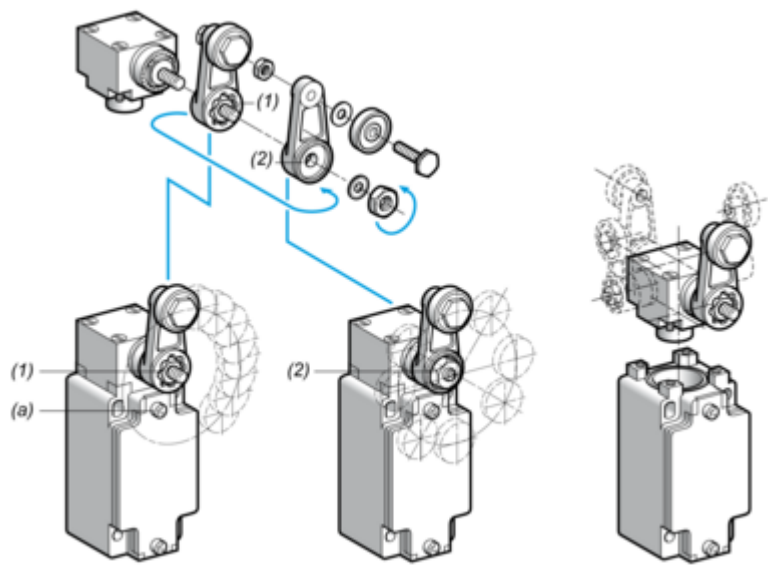
Type of Cam



- (1) Recommended
- (2) To be avoided

Setting-up with Lever Head

---



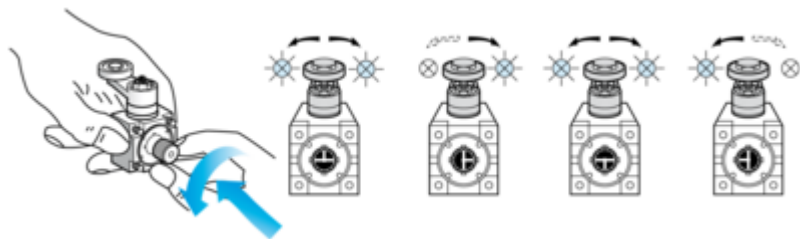
- (1) 5° steps throughout 360° / Tightening torque (Min : 1) (Max : 1.5)
- (2) 45° steps throughout 360° / Tightening torque (Min : 1) (Max : 1.5)
- (a) Tightening torque (Min : 1) (Max : 1.5)



Setting-up with Head ZCKE05

---

Direction of Actuation Programming

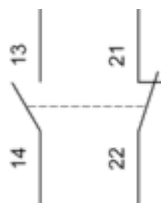


Connections and Schema

Wiring Diagram

---

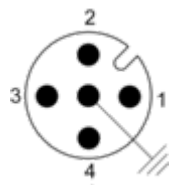
2-pole NC + NO Snap Action



Wiring Diagram

---

Connections



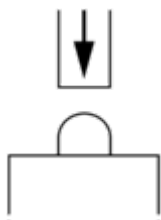
1-2 : NC  
3-4 : NO

Technical Description

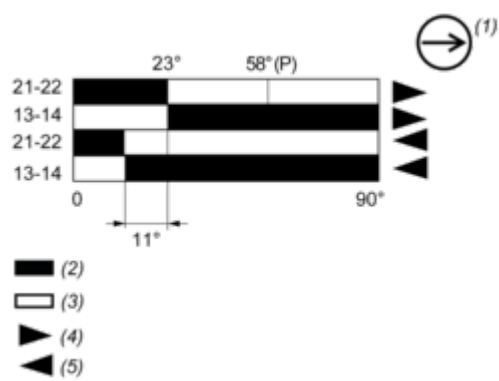
Characteristics of Actuation

---

Switch Actuation on End



Functionnal Diagram



- (P) Positive opening point
- (1) NC contact with positive opening operation
- (2) Closed
- (3) Open
- (4) Tripping
- (5) Resetting