

Product data sheet

Specifications



Limit switch, Limit switches XC Standard, XCKP, thermoplastic plastic roller lever var.length, 1NC+1 NO, snap, Pg11

XCKP2145G11

Main

Range Of Product	Telemecanique Limit switches XC Standard
Series Name	Standard format
Product Or Component Type	Limit switch
Device Short Name	XCKP
Sensor Design	Compact
Body Type	Fixed
Head Type	Rotary head
Material	Plastic
Body Material	Plastic
Head Material	Zamak
Fixing Mode	By the body
Movement Of Operating Head	Rotary
Type Of Operator	Spring return roller lever thermoplastic variable length
Type Of Approach	Lateral approach, 2 directions
Number Of Poles	2
Contacts Type And Composition	1 NC + 1 NO
Contact Operation	Snap action

Complementary

Switch Actuation	By 30° cam
Electrical Connection	Screw-clamp terminals, clamping capacity: 1 x 0.34...2 x 1.5 mm²
Cable Entry	1 entry tapped for Pg 11 cable gland
Contacts Insulation Form	Zb
Positive Opening	With
Positive Opening Minimum Torque	0.25 N.m
Minimum Torque For Tripping	0.1 N.m
Maximum Actuation Speed	1.5 m/s
Repeat Accuracy	0.1 mm on the tripping points with 1 million operating cycles
Contact Code Designation	A300, AC-15 (Ue = 240 V), Ie = 3 A, lthe = 10 A conforming to IEC 60947-5-1 appendix A Q300, DC-13 (Ue = 250 V), Ie = 0.27 A conforming to IEC 60947-5-1 appendix A

Disclaimer: This documentation is not intended as a substitute for and is not to be used for determining suitability or reliability of these products for specific user applications

[Ui] Rated Insulation Voltage	300 V conforming to UL 508 500 V (pollution degree 3) conforming to IEC 60947-1 300 V conforming to CSA C22.2 No 14
Maximum Resistance Across Terminals	25 MOhm conforming to IEC 60255-7 category 3
[Uimp] Rated Impulse Withstand Voltage	6 kV conforming to IEC 60664 6 kV conforming to IEC 60947-1
Short-Circuit Protection	10 A cartridge fuse, type gG
Electrical Durability	5000000 cycles, DC-13, 120 V, 4 W, operating rate <60 cyc/mn, load factor: 0.5 conforming to IEC 60947-5-1 appendix C 5000000 cycles, DC-13, 24 V, 10 W, operating rate <60 cyc/mn, load factor: 0.5 conforming to IEC 60947-5-1 appendix C 5000000 cycles, DC-13, 48 V, 7 W, operating rate <60 cyc/mn, load factor: 0.5 conforming to IEC 60947-5-1 appendix C
Mechanical Durability	10000000 cycles
Width	31 mm
Height	65 mm
Depth	30 mm
Net Weight	0.145 kg
Terminals Description Iso N°1	(13-14)NO (21-22)NC

Environment

Shock Resistance	50 gn for 11 ms conforming to IEC 60068-2-27
Vibration Resistance	25 gn (f= 10...500 Hz) conforming to IEC 60068-2-6
Ip Degree Of Protection	IP66 conforming to IEC 60529 IP67 conforming to IEC 60529
Ik Degree Of Protection	IK04 conforming to IEC 62262
Electrical Shock Protection Class	Class II conforming to IEC 61140 Class II conforming to NF C 20-030
Ambient Air Temperature For Operation	-25...70 °C
Ambient Air Temperature For Storage	-40...70 °C
Protective Treatment	TC
Product Certifications	UL CSA CCC
Standards	IEC 60947-5-1 CSA C22.2 No 14 IEC 60204-1 IEC 60204-1 UL 508 IEC 60947-5-1

Packing Units

Unit Type Of Package 1	PCE
Number Of Units In Package 1	1
Package 1 Height	3.200 cm
Package 1 Width	4.600 cm
Package 1 Length	12.600 cm
Package 1 Weight	125.000 g
Unit Type Of Package 2	S02

Number Of Units In Package 2	55
Package 2 Height	15.000 cm
Package 2 Width	30.000 cm
Package 2 Length	40.000 cm
Package 2 Weight	7.322 kg

Contractual warranty

Warranty	18 months
----------	-----------

Sustainability

Green Premium™ label is Schneider Electric's commitment to delivering products with best-in-class environmental performance. Green Premium promises compliance with the latest regulations, transparency on environmental impacts, as well as circular and low-CO₂ products.

Guide to assessing product sustainability is a white paper that clarifies global eco-label standards and how to interpret environmental declarations.

[Learn more about Green Premium >](#)

[Guide to assess a product's sustainability >](#)



RoHS/REACH

Well-being performance

✓ Mercury Free

✓ Rohs Exemption Information [Yes](#)

Certifications & Standards

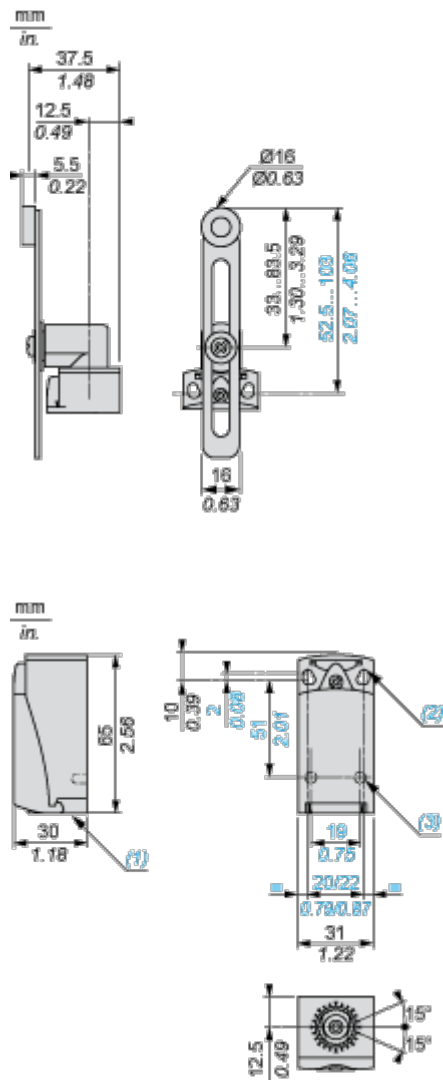
Reach Regulation [REACH Declaration](#)

Eu Rohs Directive Pro-active compliance (Product out of EU RoHS legal scope)

California Proposition 65
WARNING: This product can expose you to chemicals including: Diisononyl phthalate (DINP), which is known to the State of California to cause cancer, and Diisodecyl phthalate (DIDP), which is known to the State of California to cause birth defects or other reproductive harm. For more information go to www.P65Warnings.ca.gov

Dimensions Drawings

Dimensions

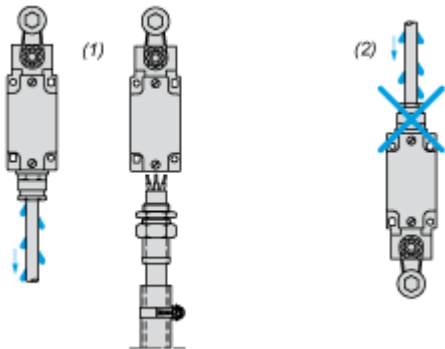


- (1) Tapped entry for Pg 11 cable gland
- (2) 2 elongated holes Ø 4.3 x 6.3 mm on 22 mm centres, 2 holes Ø 4.3 on 20 mm centres.
- (3) 2 x Ø 3 holes for support studs, depth 4 mm.

Mounting and Clearance

Mounting with Cable Entry

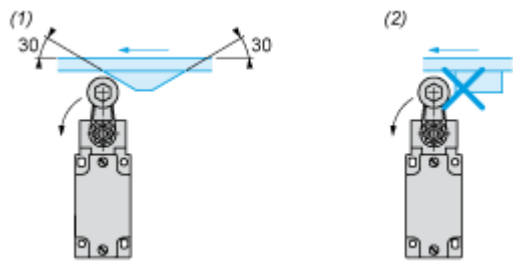
Position of Cable Gland



- (1) Recommended
- (2) To be avoided

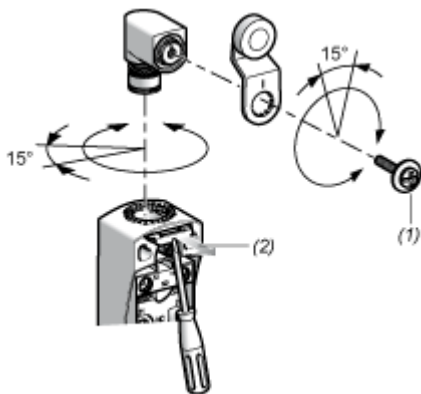
Mounting with Rotary Heads and Levers

Type of Cam



- (1) Recommended
- (2) To be avoided

Setting-up with Head ZCE01 and ZCE09

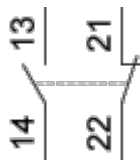


- (1) Tightening torque (Min : 1) (Max : 1.5)
- (2) Tightening torque (Min : 0.8) (Max : 1.2)

Connections and Schema

Wiring Diagram

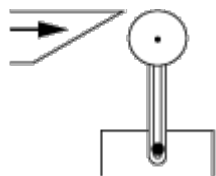
2-pole NC + NO Snap Action



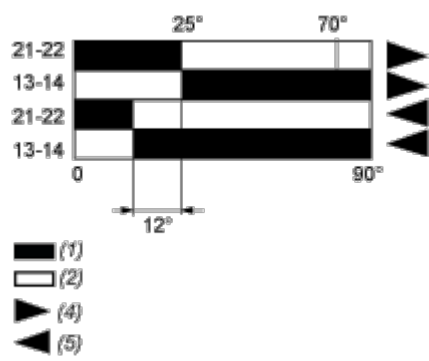
Technical Description

Characteristics of Actuation

Switch Actuation by 30° Cam



Functionnal Diagram



- (1) Closed
- (2) Open
- (4) Tripping
- (5) Resetting