

Product data sheet

Specifications



Inductive proximity sensors XS,
inductive sensor XS8 40x40x117,
PBT, Sn40 mm, 12...48 VDC,
terminals

XS8C4A4NCP20

Main

Range Of Product	Telemecanique Inductive proximity sensors XS
Series Name	General purpose
Sensor Type	Inductive proximity sensor
Device Application	Mobile equipment
Sensor Name	XS8
Sensor Design	Form 40 x 40 x 117
Size	117 mm
Body Type	Fixed
Detector Flush Mounting Acceptance	Non flush mountable
Material	Plastic
Enclosure Material	PBT
Type Of Output Signal	Discrete
Wiring Technique	4-wire
[Sn] Nominal Sensing Distance	40 mm
Discrete Output Function	1 NO + 1 NC
Output Circuit Type	DC
Discrete Output Type	NPN
Electrical Connection	Screw-clamp terminals, 4 x 1.5 mm ²
[Us] Rated Supply Voltage	12...48 V DC with reverse polarity protection
Switching Capacity In Ma	<= 200 mA with overload and short-circuit protection
Ip Degree Of Protection	IP67 conforming to IEC 60529 IP65 conforming to IEC 60529 IP69K conforming to DIN 40050

Complementary

Detection Face	5 positions turret head
Front Material	PBT
Operating Zone	0...32 mm
Differential Travel	3...15% of Sr
Repeat Accuracy	<= 3% of Sr
Cable Entry Number	1 tapped entry for M20 x 1.5 cable gland

Disclaimer: This documentation is not intended as a substitute for and is not to be used for determining suitability or reliability of these products for specific user applications

Status Led	Supply on: 1 LED (green) Output state: 1 LED (yellow)
Supply Voltage Limits	10...58 V DC
Switching Frequency	<= 200 Hz
Maximum Voltage Drop	<2 V (closed)
Current Consumption	0...15 mA no-load
Maximum Delay First Up	7.5 ms
Maximum Delay Response	1.4 ms
Maximum Delay Recovery	2.5 ms
Marking	CE
Height	40 mm
Length	40 mm
Width	117 mm
Net Weight	0.244 kg

Environment

Product Certifications	CSA E2 CCC UL
Ambient Air Temperature For Operation	-25...70 °C
Ambient Air Temperature For Storage	-40...85 °C
Vibration Resistance	25 gn amplitude = +/- 2 mm (f = 10...55 Hz) conforming to IEC 60068-2-6
Shock Resistance	50 gn for 11 ms conforming to IEC 60068-2-27

Packing Units

Unit Type Of Package 1	PCE
Number Of Units In Package 1	1
Package 1 Height	5.0 cm
Package 1 Width	5.0 cm
Package 1 Length	14.5 cm
Package 1 Weight	244.0 g

Contractual warranty

Warranty	18 months
----------	-----------

Sustainability

Green Premium™ label is Schneider Electric's commitment to delivering products with best-in-class environmental performance. Green Premium promises compliance with the latest regulations, transparency on environmental impacts, as well as circular and low-CO₂ products.

Guide to assessing product sustainability is a white paper that clarifies global eco-label standards and how to interpret environmental declarations.

[Learn more about Green Premium >](#)

[Guide to assess a product's sustainability >](#)



RoHS/REACH

Well-being performance

✓ Mercury Free

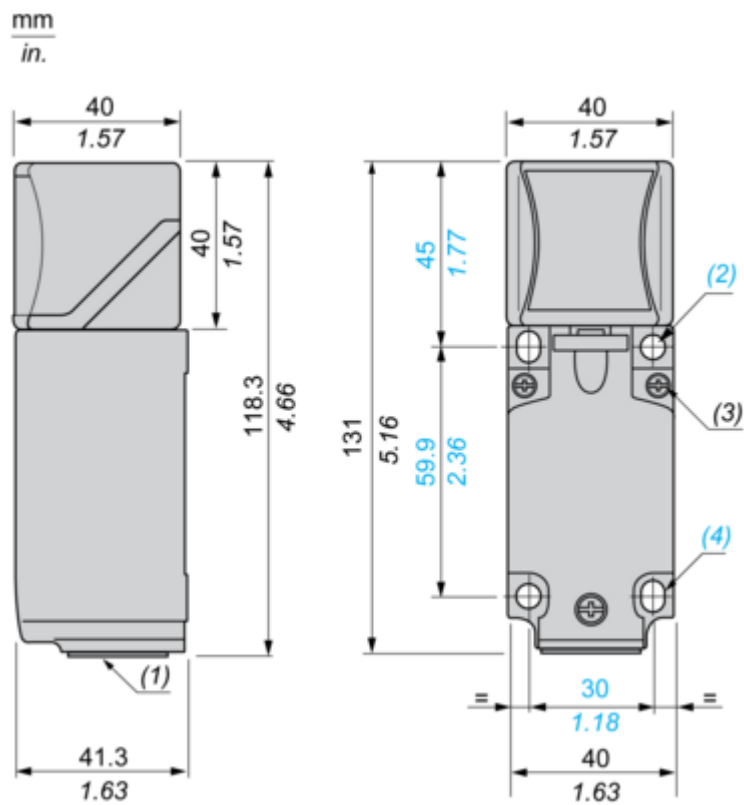
✓ Rohs Exemption Information [Yes](#)

Certifications & Standards

Reach Regulation	REACH Declaration
Eu Rohs Directive	Pro-active compliance (Product out of EU RoHS legal scope)
Circularity Profile	No need of specific recycling operations
California Proposition 65	WARNING: This product can expose you to chemicals including: Diisononyl phthalate (DINP), which is known to the State of California to cause cancer, and Diisodecyl phthalate (DIDP), which is known to the State of California to cause birth defects or other reproductive harm. For more information go to www.P65Warnings.ca.gov

Dimensions Drawings

Dimensions

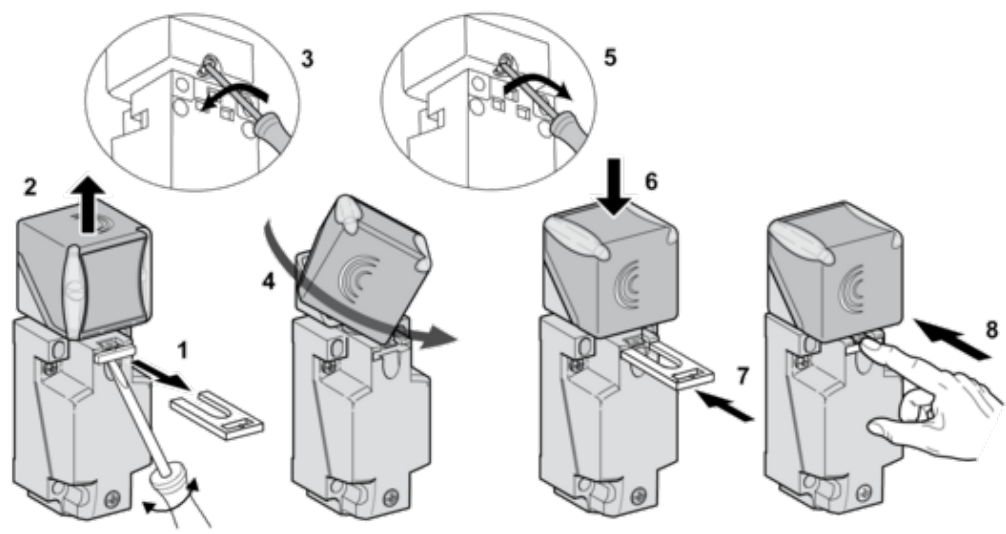


- (1) : M20 x 1.5 cable gland.
(2) : 2 holes Ø 5,45 mm / Ø 0.21 in. Tightening torque: < 1,5 Nm / < 13.3 lb-in.
(3) : 3 screws M3,5. Tightening torque: < 1,2 Nm / < 10.6 lb-in.
(4) : 2 elongated holes 5,4 x 7,4 mm / 0.21 x 0.29 in. Tightening torque: < 1,5 Nm / < 13.3 lb-in".

Mounting and Clearance

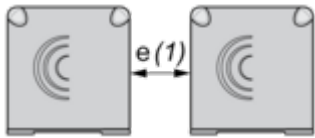
Mounting

Head Positions

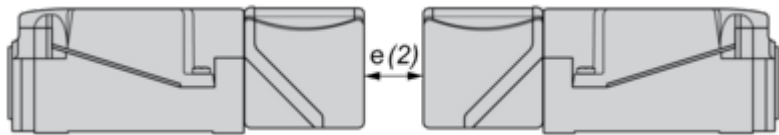


Setting-up Precautions

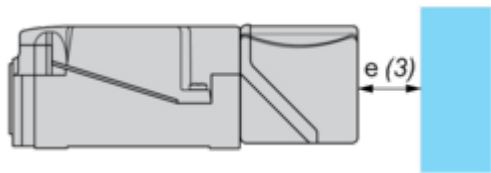
Side by Side



$e(1) \geq 160$
Face to Face



$e(2) \geq 320$
Facing a Metal Object



$e(3) \geq 120$

Connections and Schema

Wiring Schemes

4-Wire DC

