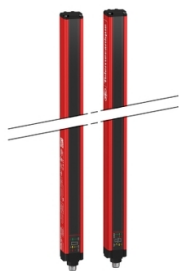


Product data sheet

Specifications



Safety light curtain type 2,
Telemecanique Safety light curtains
XUSL, XUSL Hand protection, Std
sensing range, Hp = 460 mm, R=30
mm

XUSL2E30H046N

Main

Range Of Product	Telemecanique Safety light curtains XUSL
Product Or Component Type	Safety light curtain type 2
Device Short Name	XUSL2E
Output Type	2 safety outputs OSSD solid-state PNP (arc suppression)
Product Specific Application	For hand protection
[R] Resolution	30 mm
[Sn] Nominal Sensing Distance	0...12 m by cabling 0...4 m by cabling
[Hp] Height Protected	460 mm
Number Of Beams	23
Type Of Start / Restart	Automatic Manual
External Device Monitoring (Edm)	Selected by wiring

Complementary

Detection System	Transmitter-receiver system
Response Time	8 ms
Kit Composition	adjustable mounting bracket(s) 1 receiver(s) 1 transmitter(s) 1 user guide with certificate of conformity on CD-ROM
[Eaa] Effective Aperture Angle	5 ° at 3 m
Emission	IR LED 950 nm
[Us] Rated Supply Voltage	24 V DC +/- 20 %
Supply	Power supply conforming to IEC 61496-1 Power supply conforming to IEC 60204-1
[Ie] Rated Operational Current	2 A
Current Consumption	42 mA no-load transmitter 83 mA no-load receiver 42 mA transmitter 900 mA with maximum load receiver
Output Current Limits	0.4 A for safety outputs OSSD
Output Voltage	24 V
Output Circuit Type	DC
Maximum Voltage Drop	<0.5 V

Disclaimer: This documentation is not intended as a substitute for and is not to be used for determining suitability or reliability of these products for specific user applications

Local Signalling	1 multi-colour LED transmitter 2 dual colour LEDs receiver
Electrical Connection	1 male connector M12 5 pins transmitter 1 male connector M12 8 pins receiver
Function Available	Test Muting through external safety module XPSLCMUT1160 LED display of operating modes and faults
Marking	CE
Material	Aluminium: casing Polycarbonate: front panel Polypropylene: end caps
Housing Colour	Red RAL 3000
Fixing Mode	By fixing brackets
Net Weight	1 kg
Offer Type	Standard distance

Environment

Directives	98/37/EEC - machinery 89/655/EEC - work equipment 89/336/EEC - electromagnetic compatibility
Product Certifications	cULus TÜV CE
Safety Level (Correctly Wired)	Type 2 conforming to IEC 61496-1 Category 2 conforming to ISO 13849-1 SIL 1 conforming to IEC 61508 SILCL 1 conforming to IEC 62061 PL = c conforming to ISO 13849-1
Optical Characteristic	Resistance to light disturbance conforming to IEC 61496-2
Mission Time	20 year(s)
Safety Reliability Data	PFHd = 3.30E-8 1/h conforming to IEC 61508
Ambient Air Temperature For Operation	-10...55 °C -30...55 °C
Ambient Air Temperature For Storage	-25...70 °C -35...70 °C
Relative Humidity	0...95 % without condensation
Ip Degree Of Protection	IP65 IP67
Shock Resistance	10 gn for 16 ms conforming to IEC 61496-1
Vibration Resistance	0.35 +/- 0.05 mm (f= 10...55 Hz) conforming to IEC 61496-1

Packing Units

Unit Type Of Package 1	PCE
Number Of Units In Package 1	1
Package 1 Height	14.200 cm
Package 1 Width	19.800 cm
Package 1 Length	54.600 cm
Package 1 Weight	1.905 kg
Unit Type Of Package 2	S04

Number Of Units In Package 2	2
Package 2 Height	30.000 cm
Package 2 Width	40.000 cm
Package 2 Length	60.000 cm
Package 2 Weight	4.432 kg

Contractual warranty

Warranty	18 months
----------	-----------

Sustainability

Green Premium™ label is Schneider Electric's commitment to delivering products with best-in-class environmental performance. Green Premium promises compliance with the latest regulations, transparency on environmental impacts, as well as circular and low-CO₂ products.

Guide to assessing product sustainability is a white paper that clarifies global eco-label standards and how to interpret environmental declarations.

[Learn more about Green Premium >](#)

[Guide to assess a product's sustainability >](#)



RoHS/REACH

Well-being performance

✓ Reach Free Of Svhc

✓ Toxic Heavy Metal Free

✓ Mercury Free

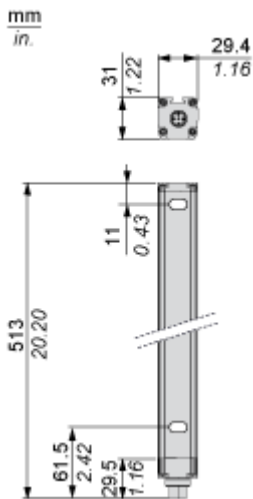
✓ Rohs Exemption Information Yes

Certifications & Standards

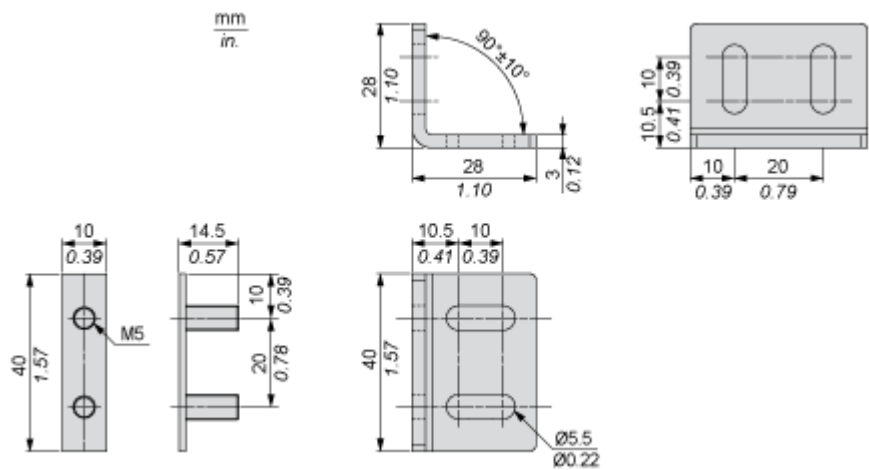
Reach Regulation	REACH Declaration
Eu Rohs Directive	Pro-active compliance (Product out of EU RoHS legal scope) EU RoHS Declaration
California Proposition 65	WARNING: This product can expose you to chemicals including: Diisononyl phthalate (DINP), which is known to the State of California to cause cancer, and Diisodecyl phthalate (DIDP), which is known to the State of California to cause birth defects or other reproductive harm. For more information go to www.P65Warnings.ca.gov

Dimensions Drawings

Dimensions

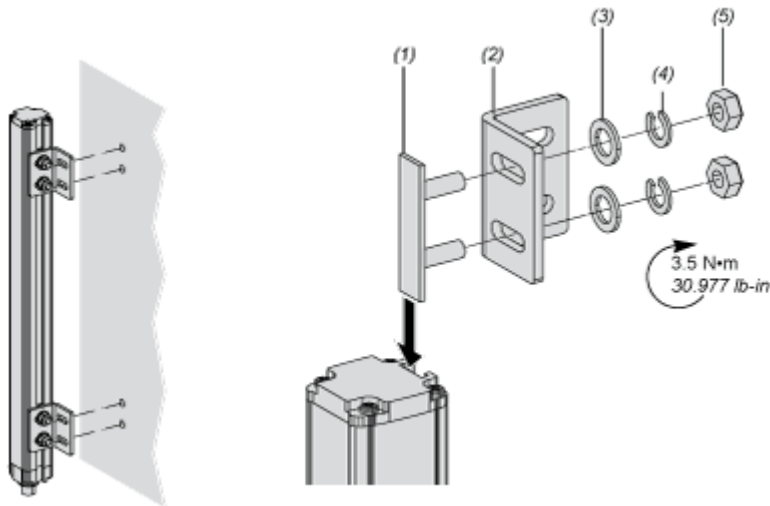


Brackets Dimensions



Mounting and Clearance

Mounting and Clearance

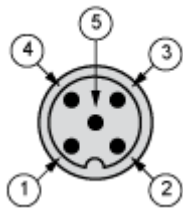


- (1) Insert
- (2) Bracket
- (3) Washer
- (4) Spring washer
- (5) Nut

Connections and Schema

Wiring Diagrams

Transmitter Connections

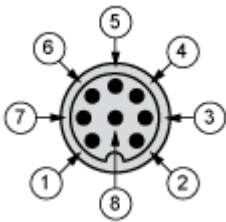


- (1) +24 Vdc
- (2) Configuration_0
- (3) 0 Vdc
- (4) Configuration_1
- (5) FE

Transmitter configurations and operating modes

	High range option	Low range option	Transmitter in Test state	Forbidden wiring
Pin 4 : Configuration_1	24 V	0 V	0 V	24 V
Pin 2 : Configuration_0	0 V	24 V	0 V	24 V

Receiver Connections

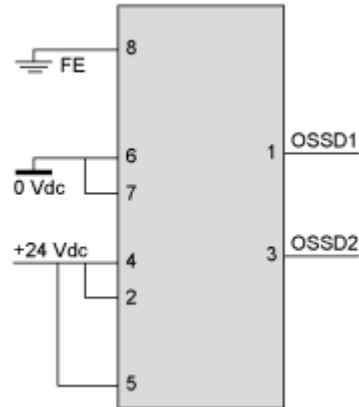


- (1) OSSD1
- (2) + 24 V
- (3) OSSD2
- (4) Configuration_A
- (5) K1_K2 Feeback/Restart
- (6) Configuration_B
- (7) 0 Vdc
- (8) FE

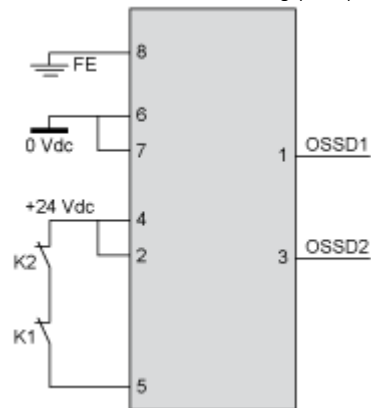
Receiver Configurations and Operating Modes

Automatic Start/Restart

Without External Device Monitoring (EDM) feedback loop

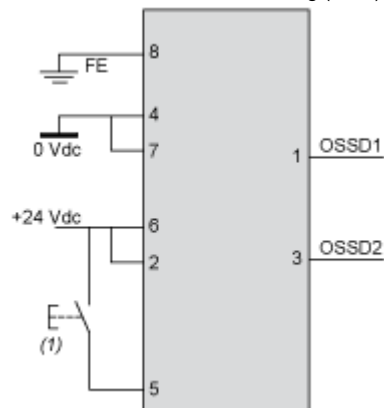


With External Device Monitoring (EDM) feedback loop



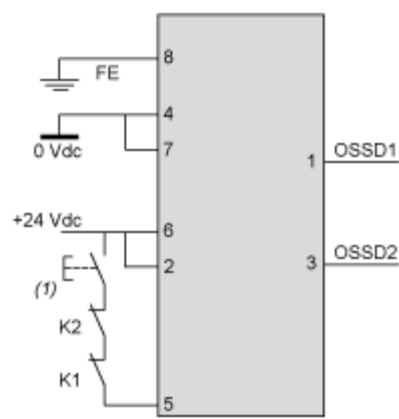
Manual Start/Restart

Without External Device Monitoring (EDM) feedback loop



(1) Restart

With External Device Monitoring (EDM) feedback loop



(1) Restart

Connecting to a Safety Interface



- 1 : Click on Download & Documents
- 2 : Click on Application solutions

To have all connection schematics concerning our safety module, select "download and document" and download the file "Safety light curtains association with safety interfaces"