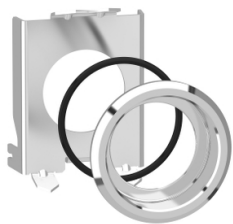


Product data sheet

Specifications



Flush mounting kit 30mm for push button and pilot light 22mm, Harmony XB4, metal

ZB4BZ021

Main

Range Of Product	Harmony XB4
Product Or Component Type	Flush mounting kit
Accessory / Separate Part Category	Mounting and fixing accessory
Accessory / Separate Part Destination	Pilot light Push-button

Complementary

Product Compatibility	ZB4BH flush ZB4BL ZB4BA flush ZB4BV
Surface Finish	Chromium plated
Ip Degree Of Protection	IP66 (front face) conforming to IEC 60529 IP69 (front face) conforming to IEC 60529 IP69K (front face) conforming to DIN 40050-9
Ik Degree Of Protection	IK06 conforming to IEC 50102
Mounting Diameter	30.5 mm
Quantity Per Set	Set of 1

Packing Units

Unit Type Of Package 1	PCE
Number Of Units In Package 1	1
Package 1 Height	4.400 cm
Package 1 Width	5.300 cm
Package 1 Length	5.500 cm
Package 1 Weight	32.000 g
Unit Type Of Package 2	S02
Number Of Units In Package 2	80
Package 2 Height	15.000 cm
Package 2 Width	30.000 cm
Package 2 Length	40.000 cm
Package 2 Weight	2.860 kg
Unit Type Of Package 3	P06
Number Of Units In Package 3	1280

Disclaimer: This documentation is not intended as a substitute for and is not to be used for determining suitability or reliability of these products for specific user applications

Package 3 Height	75.000 cm
Package 3 Width	60.000 cm
Package 3 Length	80.000 cm
Package 3 Weight	54.260 kg

Sustainability

Green Premium™ label is Schneider Electric's commitment to delivering products with best-in-class environmental performance. Green Premium promises compliance with the latest regulations, transparency on environmental impacts, as well as circular and low-CO₂ products.

Guide to assessing product sustainability is a white paper that clarifies global eco-label standards and how to interpret environmental declarations.

[Learn more about Green Premium >](#)

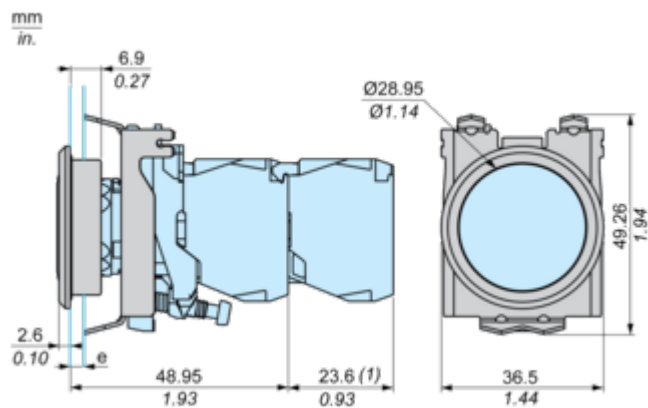
[Guide to assess a product's sustainability >](#)

Well-being performance

✓	Reach Free Of Svhc	
✓	Toxic Heavy Metal Free	
✓	Mercury Free	
✓	Rohs Exemption Information	Yes
Reach Regulation	REACH Declaration	
Eu Rohs Directive	Compliant EU RoHS Declaration	
China Rohs Regulation	China RoHS declaration	
Weee	The product must be disposed on European Union markets following specific waste collection and never end up in rubbish bins	

Dimensions Drawings

Dimensions with Flush Mounting Kit



e : Clamping thickness : 1.2 to 2.8 mm / 0.05 to 0.11 in.
(1) Additional row of contacts or double contact

Mounting and Clearance

Panel Cut-Out and Mounting

