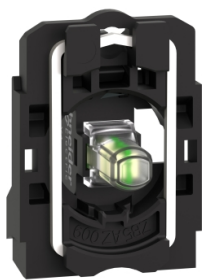


Product data sheet

Specifications



Complete body light block assembly,
Harmony XB5, plastic, universal
LED, body fixing collar, 24V AC DC

ZB5AVB1

Main

| | |
|-------------------------------|--|
| Range Of Product | Harmony XB5 |
| Product Or Component Type | Complete body/light block assembly |
| Device Short Name | ZB5 |
| Fixing Collar Material | Plastic |
| Sale Per Indivisible Quantity | 1 |
| Connections - Terminals | Screw clamp terminals, $\leq 2 \times 1.5 \text{ mm}^2$ with cable end conforming to IEC 60947-1 Screw clamp terminals, $\geq 1 \times 0.22 \text{ mm}^2$ without cable end conforming to IEC 60947-1 |
| Light Source | Universal LED |
| Bulb Base | Integral LED |
| Light Source Colour | White |

Complementary

| | |
|--|---|
| Cad Overall Width | 30 mm |
| Cad Overall Height | 42 mm |
| Cad Overall Depth | 32 mm |
| Terminals Description Iso N°1 | (X1-X2)PL |
| Net Weight | 0.022 kg |
| Tightening Torque | 0.8...1.2 N.m conforming to IEC 60947-1 |
| Shape Of Screw Head | Cross compatible with Philips no 1 screwdriver Cross compatible with pozidriv No 1 screwdriver Slotted compatible with flat Ø 4 mm screwdriver Slotted compatible with flat Ø 5.5 mm screwdriver |
| [Ui] Rated Insulation Voltage | 600 V (pollution degree 3) conforming to IEC 60947-1 |
| [Uimp] Rated Impulse Withstand Voltage | 6 kV conforming to IEC 60947-1 |
| Signalling Type | Steady |
| [Us] Rated Supply Voltage | 24 V AC/DC at 50/60 Hz |
| Supply Voltage Limits | 19.2...30 V DC 21.6...26.4 V AC |
| Current Consumption | 18 mA |
| Service Life | 100000 h at rated voltage and 25 °C |
| Surge Withstand | 1 kV conforming to IEC 61000-4-5 |
| Device Presentation | Basic sub-assemblies |

Disclaimer: This documentation is not intended as a substitute for and is not to be used for determining suitability or reliability of these products for specific user applications

Environment

| | |
|---------------------------------------|--|
| Protective Treatment | TH |
| Ambient Air Temperature For Storage | -40...70 °C |
| Ambient Air Temperature For Operation | -40...70 °C |
| Electrical Shock Protection Class | Class II conforming to IEC 60536 |
| Standards | JIS C8201-5-1 IEC 60947-5-4 IEC 60947-5-1 UL 508 IEC 60947-1 CSA C22.2 No 14 JIS C8201-1 |
| Product Certifications | LROS (Lloyds register of shipping) GL BV CSA DNV UL listed |
| Vibration Resistance | 5 gn (f= 2...500 Hz) conforming to IEC 60068-2-6 |
| Shock Resistance | 30 gn (duration = 18 ms) for half sine wave acceleration conforming to IEC 60068-2-27 50 gn (duration = 11 ms) for half sine wave acceleration conforming to IEC 60068-2-27 |
| Resistance To Fast Transients | 2 kV conforming to IEC 61000-4-4 |
| Resistance To Electromagnetic Fields | 10 V/m conforming to IEC 61000-4-3 |
| Resistance To Electrostatic Discharge | 6 kV on contact (on metal parts) conforming to IEC 61000-2-6 8 kV in free air (in insulating parts) conforming to IEC 61000-2-6 |
| Electromagnetic Emission | Class B conforming to IEC 55011 |

Packing Units

| | |
|------------------------------|-----------|
| Unit Type Of Package 1 | PCE |
| Number Of Units In Package 1 | 1 |
| Package 1 Height | 5.600 cm |
| Package 1 Width | 3.400 cm |
| Package 1 Length | 5.400 cm |
| Package 1 Weight | 20.000 g |
| Unit Type Of Package 2 | BB1 |
| Number Of Units In Package 2 | 5 |
| Package 2 Height | 5.600 cm |
| Package 2 Width | 3.400 cm |
| Package 2 Length | 26.500 cm |
| Package 2 Weight | 100.000 g |
| Unit Type Of Package 3 | S03 |
| Number Of Units In Package 3 | 200 |
| Package 3 Height | 30.000 cm |
| Package 3 Width | 30.000 cm |
| Package 3 Length | 40.000 cm |
| Package 3 Weight | 4.489 kg |

Contractual warranty

| | |
|----------|-----------|
| Warranty | 18 months |
|----------|-----------|

Sustainability



Green Premium™ label is Schneider Electric's commitment to delivering products with best-in-class environmental performance. Green Premium promises compliance with the latest regulations, transparency on environmental impacts, as well as circular and low-CO₂ products.

Guide to assessing product sustainability is a white paper that clarifies global eco-label standards and how to interpret environmental declarations.

[Learn more about Green Premium >](#)

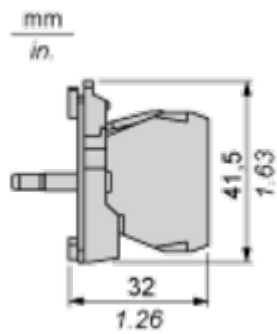
[Guide to assess a product's sustainability >](#)

Well-being performance

| | |
|--|---|
|  Mercury Free | |
|  Rohs Exemption Information | Yes |
| Reach Regulation | REACH Declaration |
| Eu Rohs Directive | Pro-active compliance (Product out of EU RoHS legal scope) |
| China Rohs Regulation | China RoHS declaration |
| Weee | The product must be disposed on European Union markets following specific waste collection and never end up in rubbish bins |
| California Proposition 65 | WARNING: This product can expose you to chemicals including: Lead and lead compounds, which is known to the State of California to cause cancer and birth defects or other reproductive harm. For more information go to www.P65Warnings.ca.gov |

Dimensions Drawings

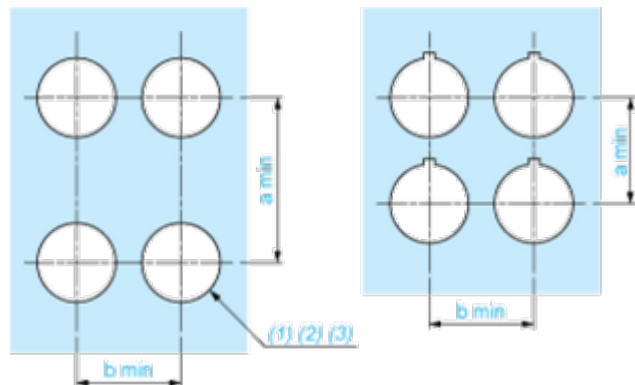
Dimensions



Mounting and Clearance

Panel Cut-out for Pushbuttons, Switches and Pilot Lights (Finished Holes, Ready for Installation)

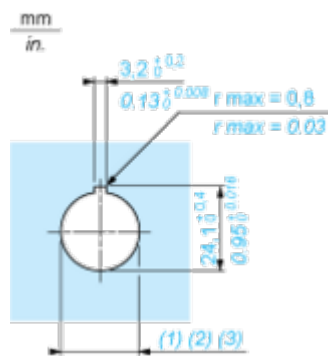
Connection by Screw Clamp Terminals or Plug-in Connectors or on Printed Circuit Board



- (1) Diameter on finished panel or support
- (2) For selector switches and Emergency stop buttons, use of an anti-rotation plate type ZB5AZ902 is recommended.
- (3) Ø22.5 mm recommended ($\text{Ø}22.3 \begin{smallmatrix} +0.4 \\ 0 \end{smallmatrix}$) / Ø0.89 in. recommended ($\text{Ø}0.88 \text{ in. } \begin{smallmatrix} +0.016 \\ 0 \end{smallmatrix}$)

| Connections | a in mm | a in in. | b in mm | b in in. |
|---|---------|----------|---------|----------|
| By screw clamp terminals or plug-in connector | 40 | 1.57 | 30 | 1.18 |
| By Faston connectors | 45 | 1.77 | 32 | 1.26 |
| On printed circuit board | 30 | 1.18 | 30 | 1.18 |

Detail of Lug Recess



- (1) Diameter on finished panel or support
- (2) For selector switches and Emergency stop buttons, use of an anti-rotation plate type ZB5AZ902 is recommended.
- (3) Ø22.5 mm recommended ($\text{Ø}22.3 \begin{smallmatrix} +0.4 \\ 0 \end{smallmatrix}$) / Ø0.89 in. recommended ($\text{Ø}0.88 \text{ in. } \begin{smallmatrix} +0.016 \\ 0 \end{smallmatrix}$)