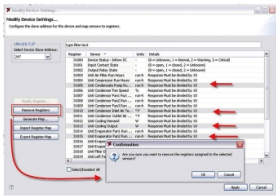


Product datasheet

Specifications



StruxureWare data center expert Modbus TCP output module

AP95MODBUS

Price: 100,045.21 ZAR

Overview

Presentation	The add-on Modbus TCP Output Module enables connection to Building Management Systems through ethernet transmission, ensuring fast data transmission.
Lead Time	Usually in Stock

Packing Units

Unit Type Of Package 1	PCE
Number Of Units In Package 1	1
Package 1 Height	22.9 cm
Package 1 Width	0.6 cm
Package 1 Length	17.8 cm
Package 1 Weight	0.45 kg

Excluding VAT and subject to change. Please check with your local distributor through "Where to buy"

Disclaimer: This documentation is not intended as a substitute for and is not to be used for determining suitability or reliability of these products for specific user applications

Sustainability

Green Premium™ label is Schneider Electric's commitment to delivering products with best-in-class environmental performance. Green Premium promises compliance with the latest regulations, transparency on environmental impacts, as well as circular and low-CO₂ products.

Guide to assessing product sustainability is a white paper that clarifies global eco-label standards and how to interpret environmental declarations.

[Learn more about Green Premium >](#)

[Guide to assess a product's sustainability >](#)



Energy Efficient Take-back Transparency

Resource performance

✓ Energy Efficient Product

✓ Take-Back Program Available

Reach Regulation

[REACH Declaration](#)

Eu Rohs Directive

Not applicable, out of EU RoHS legal scope

Environmental Disclosure

[Product Environmental Profile](#)

Circularity Profile

[End of Life Information](#)